

Rhythmic Equations I

Combine all note and rest values to complete the following rhythmic equations:

Examples: $\text{d.} + \text{d.} = 4$
 $\text{m.} + \text{d.} = 6$

Rhythmic Values:

$\text{d.} = 1$	$\text{z} = 1$
$\text{d.} = 2$	$\text{m.} = 2$
$\text{d.} = 3$	$\text{m.} = 3$
$\text{o} = 4$	$\text{m.} = 4$

1. $\text{z} + \text{d.} =$

9. $\text{m.} + \text{d.} + \text{o} =$

2. $\text{m.} + \text{d.} =$

10. $\text{m.} + \text{m.} + \text{z} =$

3. $\text{d.} + \text{m.} =$

11. $\text{d.} + \text{m.} + \text{z} =$

4. $\text{d.} + \text{z} + \text{d.} =$

12. $\text{z} + \text{m.} + \text{m.} =$

5. $\text{o} + \text{m.} =$

13. $\text{o} + \text{z} + \text{d.} =$

6. $\text{d.} + \text{m.} =$

14. $\text{m.} + \text{o} + \text{d.} + \text{d.} =$

7. $\text{m.} + \text{d.} =$

15. $\text{d.} + \text{m.} + \text{d.} + \text{m.} =$

8. $\text{m.} + \text{d.} + \text{d.} =$

16. $\text{z} + \text{m.} + \text{d.} + \text{m.} =$

Time Signatures and Counting I

Write the count below the notes and then clap the rhythm while counting out loud.

Pay attention to the time signature being used in each exercise.

Rhythmic values:
An eighth note (♩) = 1/2 beat
A quarter note (♩) = 1 beat
A half note (♩) = 2 beats
A dotted half note (♩.) = 3 beats
A whole note (♩) = 4 beats

1 

2 

3 

4 

5 

6 

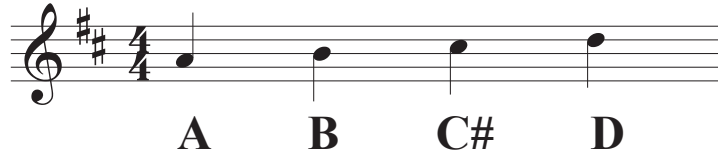
7 

Note Reading Packet

A String- Violin

Name: _____

Example

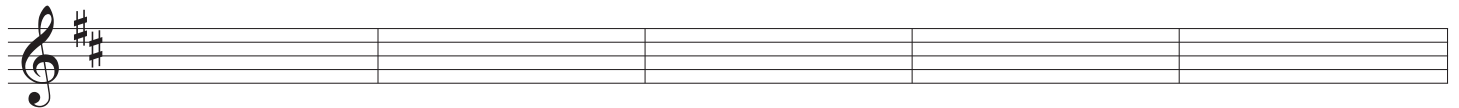


A B C# D

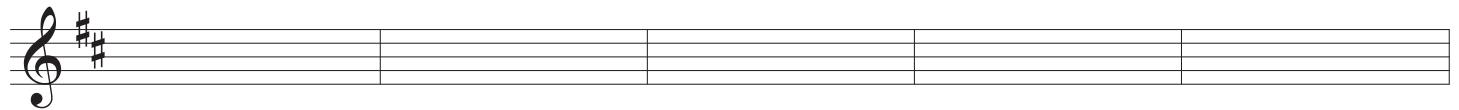
Directions: Using the example for guidance, write the correct note names for the A string.



Directions: Draw a quarter note above each letter on the correct pitch.



A B C# D D C# B A C# A D B A B D D D B A C#



B A B B C# B C# C# D C# D D A D A A B A C# D

2 Note Reading Packet

D String

- VIOLIN

Example

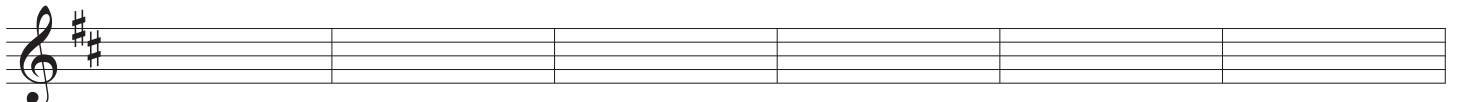


D E F# G

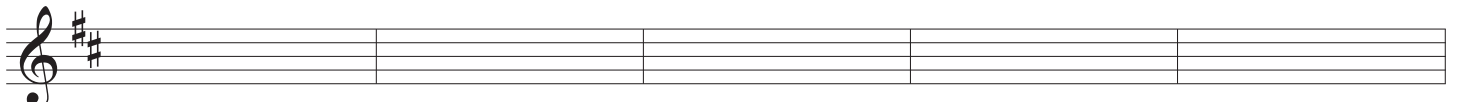
Directions: Using the example for guidance, write the correct note names for the D string.



Directions: Draw a quarter note above each letter on the correct pitch.



F# E D G G F# E D E F# E E D E E G E G G D D D G D



D D F# D E E F# G E G G D D E F# G G F# E D

Name: _____

Note Reading Packet - VIOLA

A String

Example

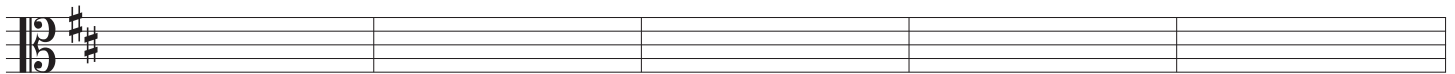


A B C# D

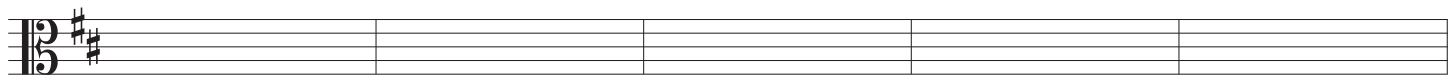
Directions: Using the example for guidance, write the correct note names for the A string.



Directions: Draw a quarter note above each letter on the correct pitch.



A B C# D D C# B A C# A D B A B D D D B A C#



B A B B C# B C# C# D C# D D A D A A B A C# D

Note Reading Packet

D String VIOLA

Example

D E F# G

Directions: Using the example for guidance, write the correct note names for the D string.

Directions: Draw a quarter note above each letter on the correct pitch.

F# E D G G F# E D E F# E E D E E G E G G D D D G D

D D F# D E E F# G E G G D D E F# G G F# E D

Name: _____

Note Reading Packet

A String CELLO AND BASS

Example

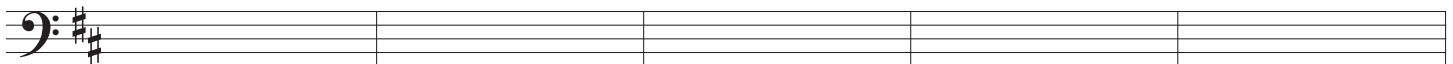


A B C# D

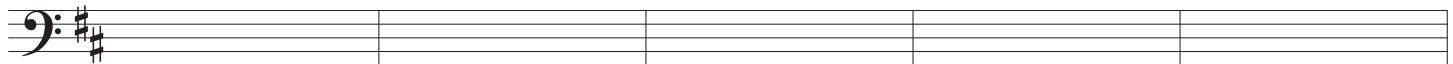
Directions: Using the example for guidance, write the correct note names for the A string.



Directions: Draw a quarter note above each letter on the correct pitch.



A B C# D D C# B A C# A D B A B D D D B A C#



B A B B C# B C# C# D C# D D A D A A B A C# D

Note Reading Packet

D String CELLO AND BASS

Example

A musical staff in bass clef with a key signature of two sharps (F# and C#). It contains four quarter notes on the D string, labeled below as D, E, F#, and G.

Directions: Using the example for guidance, write the correct note names for the D string.

A musical staff in bass clef with a key signature of two sharps. It contains a sequence of 16 quarter notes: D, E, F#, G, A, B, C, D, E, F#, G, A, B, C, D, E.

A musical staff in bass clef with a key signature of two sharps. It contains a sequence of 16 quarter notes: F#, G, A, B, C, D, E, F#, G, A, B, C, D, E, F#, G.

Directions: Draw a quarter note above each letter on the correct pitch.

A musical staff in bass clef with a key signature of two sharps. It is divided into six empty measures for note placement.

F# E D G G F# E D E F# E E D E E G E G G D D D G D

A musical staff in bass clef with a key signature of two sharps. It is divided into five empty measures for note placement.

D D F# D E E F# G E G G D D E F# G G F# E D